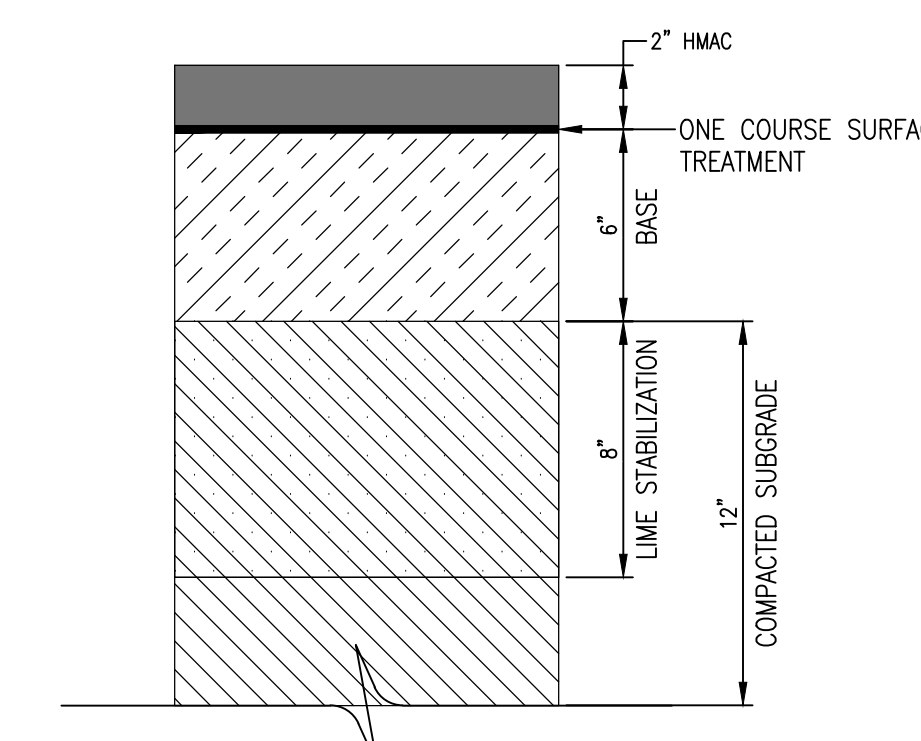
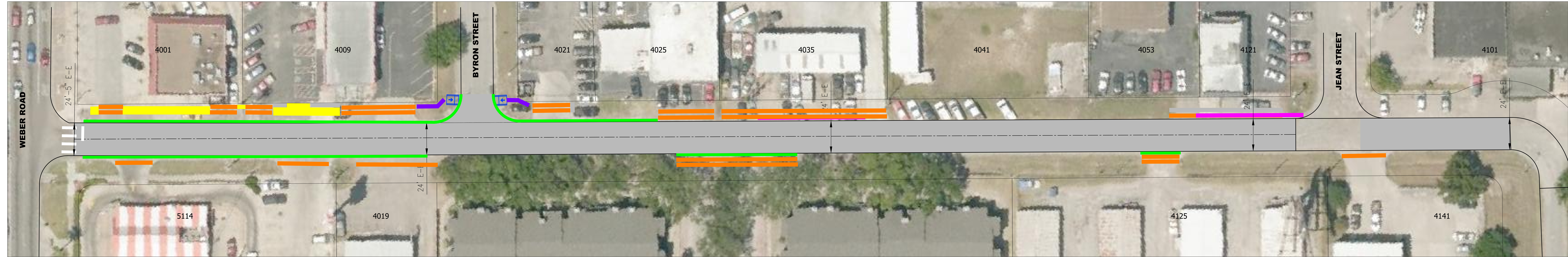
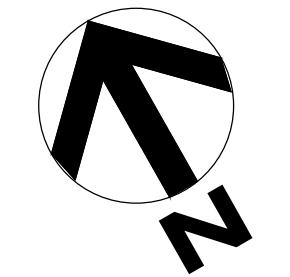


BRETT STREET

WEBER RD. TO JEAN ST.
RESIDENTIAL STREET REBUILD PROGRAM (2019)



PRELIMINARY PAVEMENT SECTION

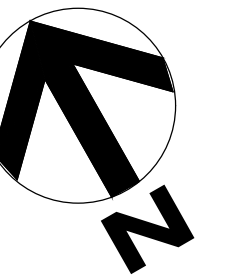
LEGEND

- PROPOSED PAVEMENT
- PROPOSED SIDEWALK REMOVE AND REPLACE
- PROPOSED ADA ACCESSIBILITY RAMP
- PROPOSED CURB AND GUTTER REMOVE AND REPLACE
- PROPOSED DRIVEWAY REMOVE AND REPLACE
- PROPOSED VALLEY GUTTER REMOVE AND REPLACE
- PROPOSED RE-CONSTRUCT SPEED HUMP
- PROPOSED NEW SIDEWALK

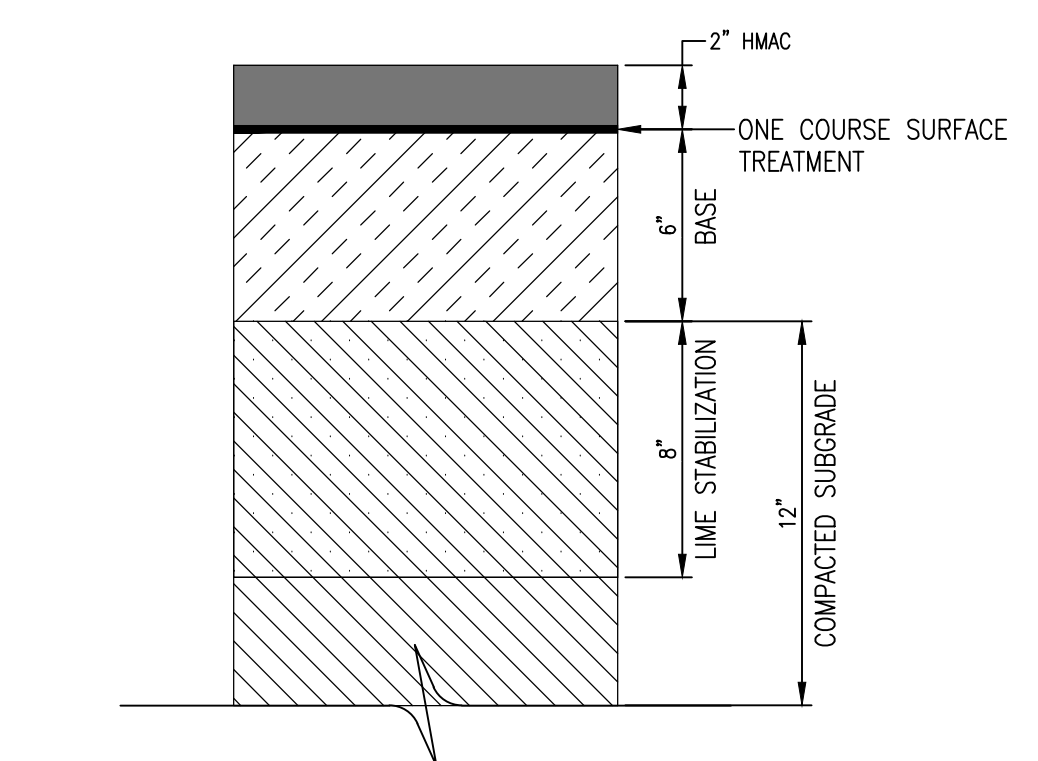


BRETT STREET

WEBER RD. TO JEAN ST.
RESIDENTIAL STREET REBUILD PROGRAM (2019)



LEGEND
■ PROPOSED PAVEMENT



PRELIMINARY PAVEMENT SECTION

