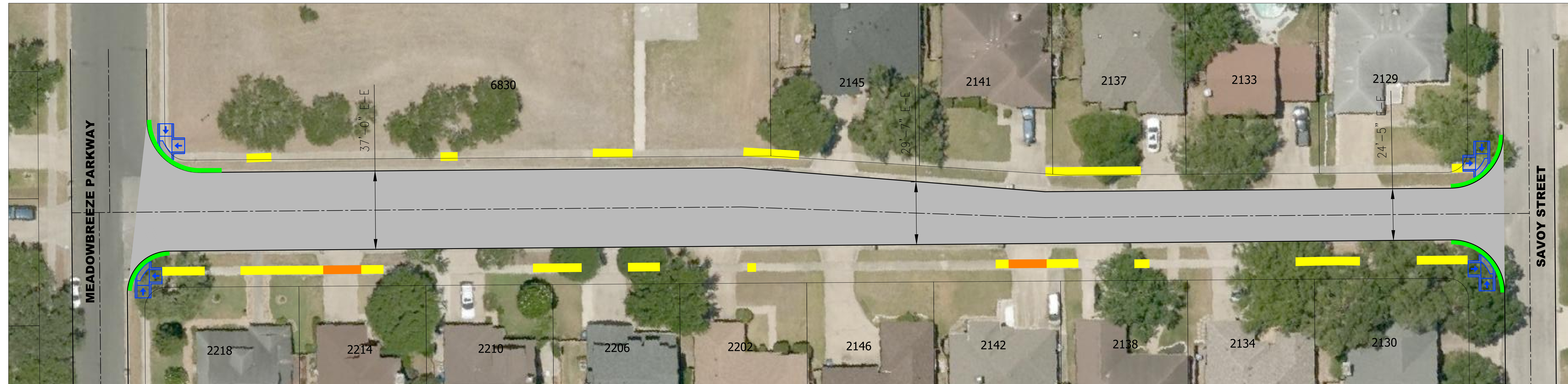
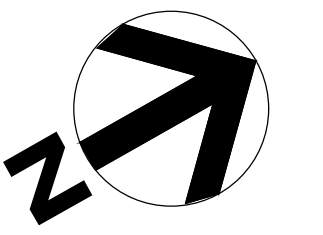


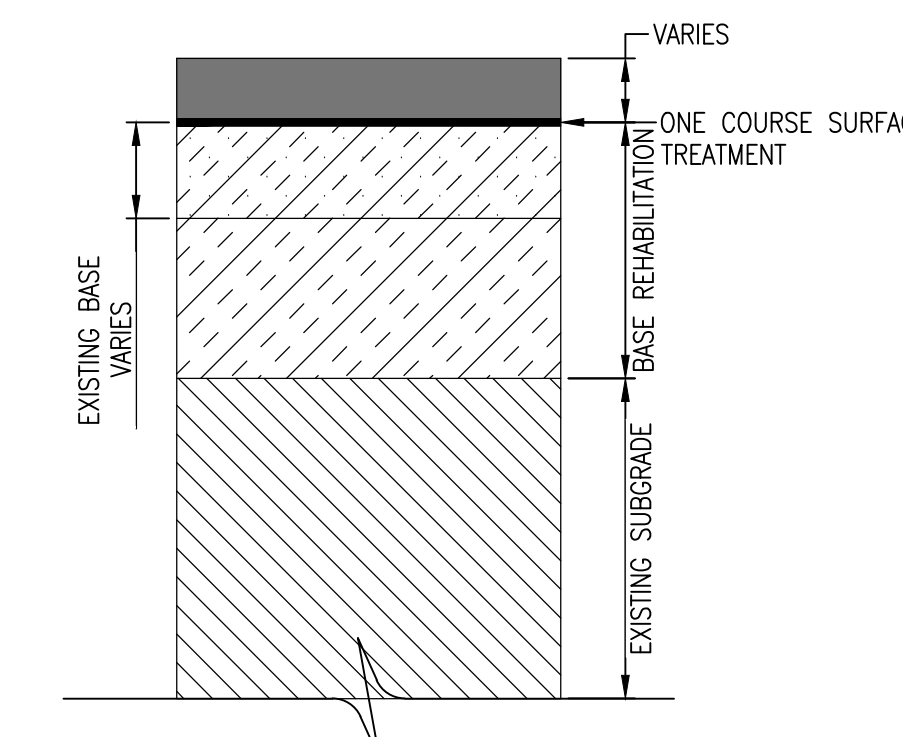
COTTON CLUB DRIVE

MEADOWBREEZE PARKWAY TO SAVOY ST.
RESIDENTIAL STREET REBUILD PROGRAM (YEAR 2019)



LEGEND

- PROPOSED PAVEMENT
- PROPOSED SIDEWALK REMOVE AND REPLACE
- PROPOSED ADA ACCESSIBILITY RAMP
- PROPOSED CURB AND GUTTER REMOVE AND REPLACE
- PROPOSED DRIVEWAY REMOVE AND REPLACE
- PROPOSED VALLEY GUTTER REMOVE AND REPLACE
- PROPOSED RE-CONSTRUCT SPEED HUMP
- PROPOSED NEW SIDEWALK

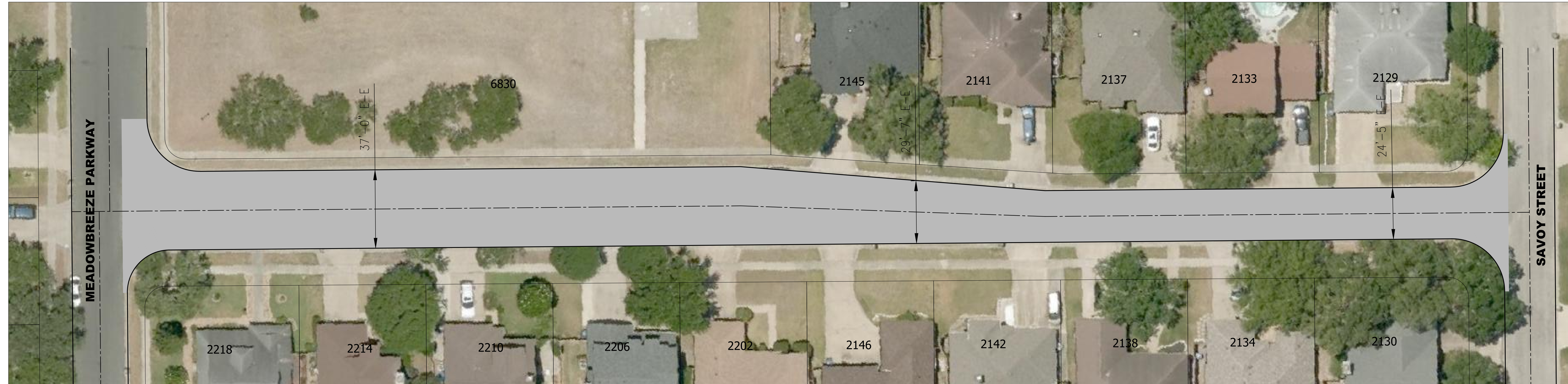
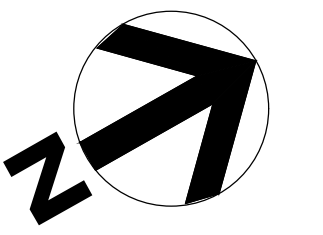


PRELIMINARY PAVEMENT SECTION

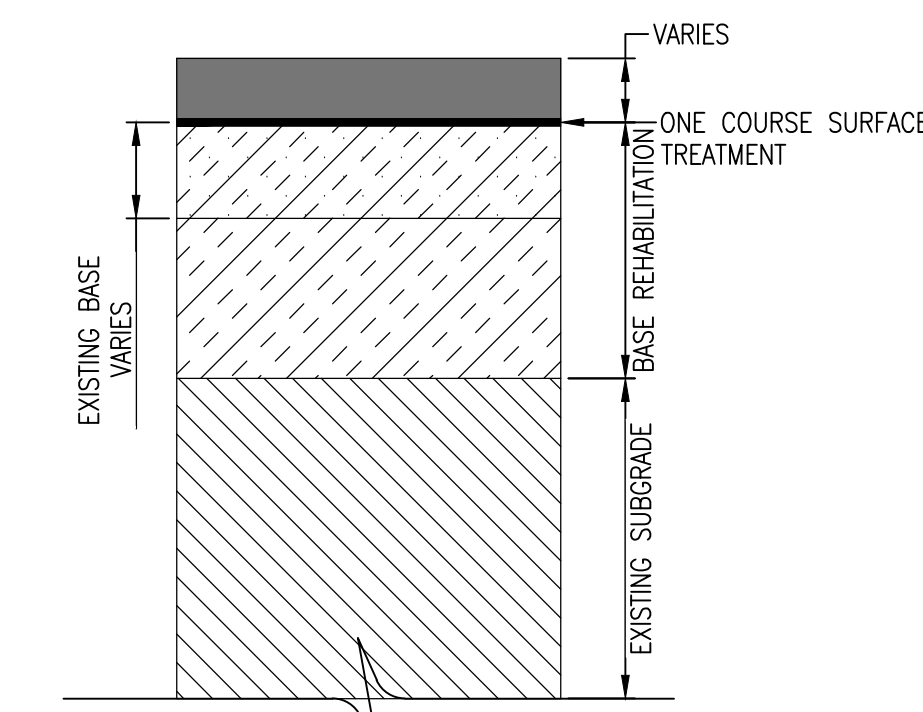


COTTON CLUB DRIVE

MEADOWBREEZE PARKWAY TO SAVOY ST.
RESIDENTIAL STREET REBUILD PROGRAM (YEAR 2019)



LEGEND
[Gray Box] PROPOSED PAVEMENT



PRELIMINARY PAVEMENT SECTION

 **HANSON**
www.hanson-inc.com



BOND

WWW.CCTEXAS.COM