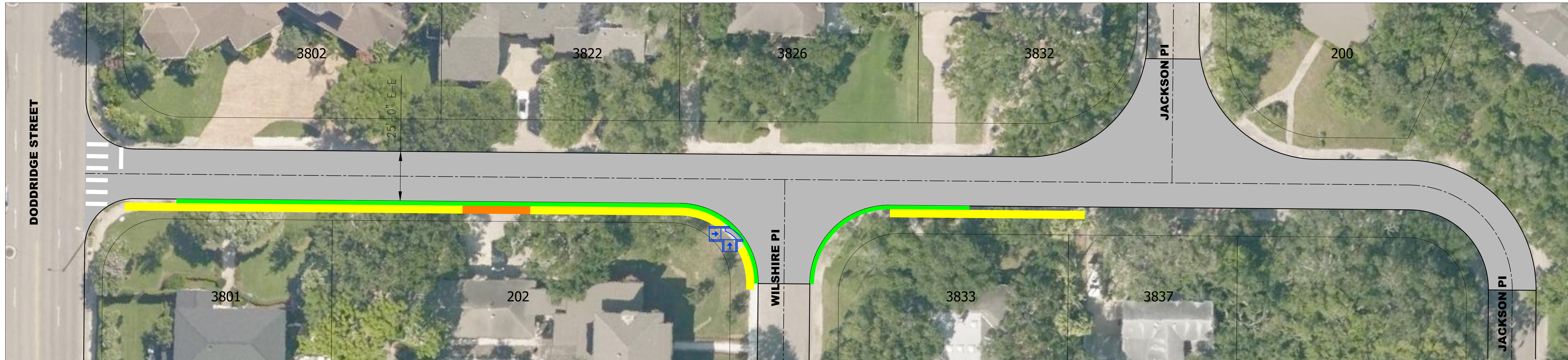
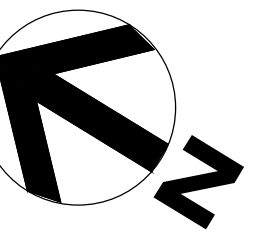
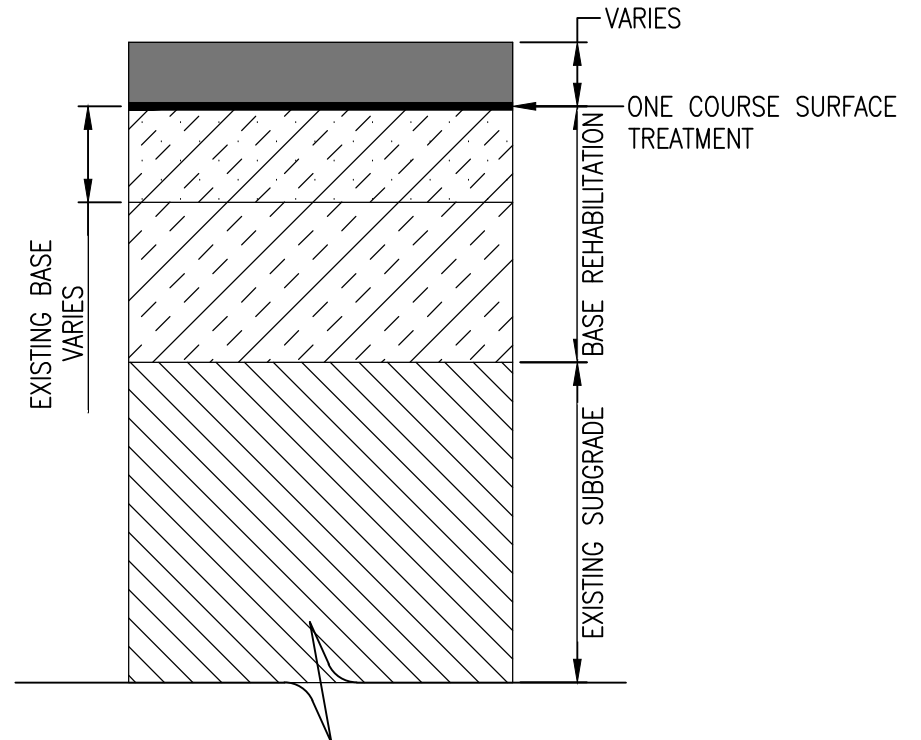


# DENVER AVENUE

**DODDRIGE RD. TO JACKSON PI.**  
RESIDENTIAL STREET REBUILD PROGRAM (YEAR 2019)



- LEGEND**
- PROPOSED PAVEMENT
  - PROPOSED SIDEWALK REMOVE AND REPLACE
  - PROPOSED ADA ACCESSIBILITY RAMPS
  - PROPOSED CURB AND GUTTER REMOVE AND REPLACE
  - PROPOSED DRIVEWAY REMOVE AND REPLACE
  - PROPOSED VALLEY GUTTER REMOVE AND REPLACE
  - PROPOSED RE-CONSTRUCT SPEED HUMP
  - PROPOSED NEW SIDEWALK

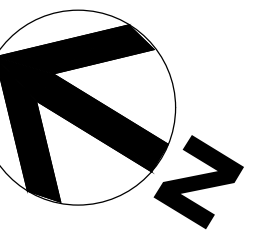


PRELIMINARY PAVEMENT SECTION

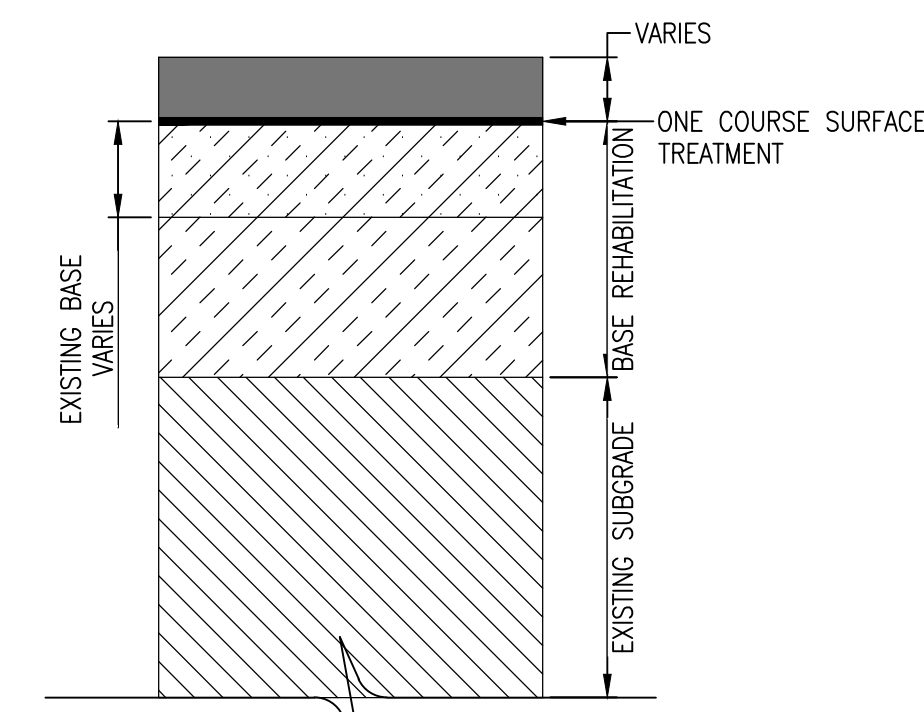


# DENVER AVENUE

**DODDRIGE RD. TO JACKSON PI.**  
RESIDENTIAL STREET REBUILD PROGRAM (YEAR 2019)



LEGEND  
[Grey Box] PROPOSED PAVEMENT



PRELIMINARY PAVEMENT SECTION

 **HANSON**  
[www.hanson-inc.com](http://www.hanson-inc.com)



**BOND**  
  
WWW.CCTEXAS.COM