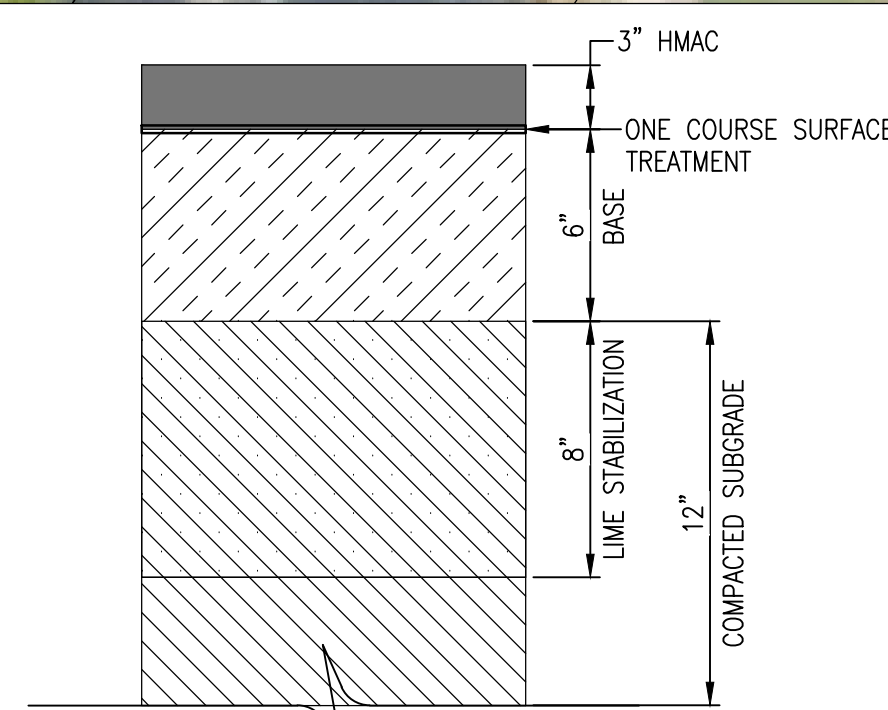
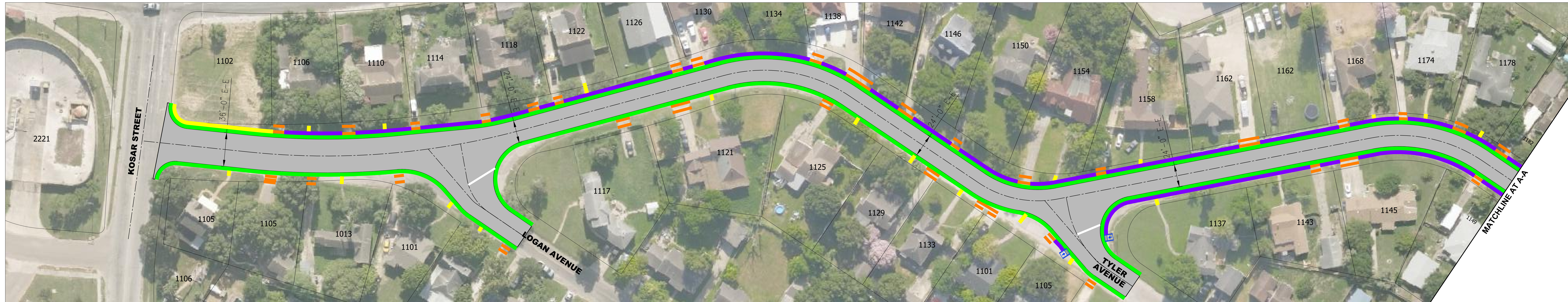
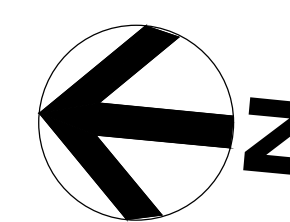


FLORIDA AVENUE

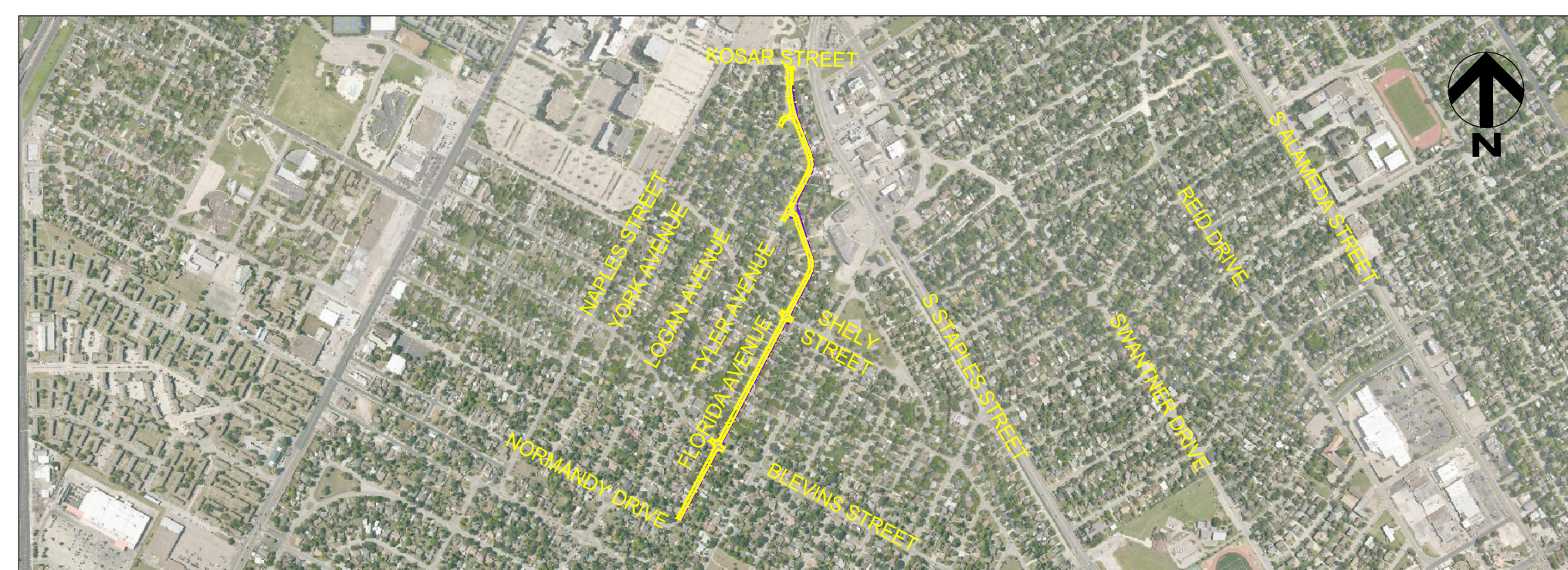
KOSAR ST. TO NORMANDY DR.
RESIDENTIAL STREET REBUILD PROGRAM (YEAR 2019)



PRELIMINARY PAVEMENT
SECTION

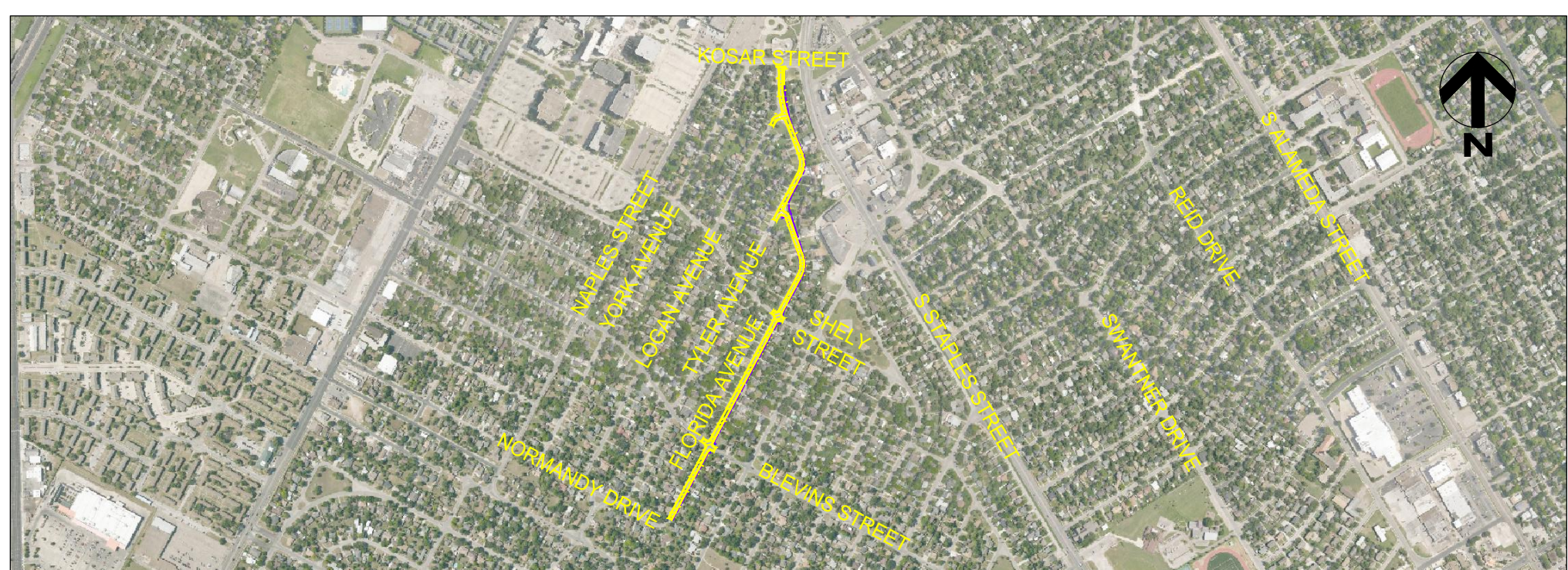
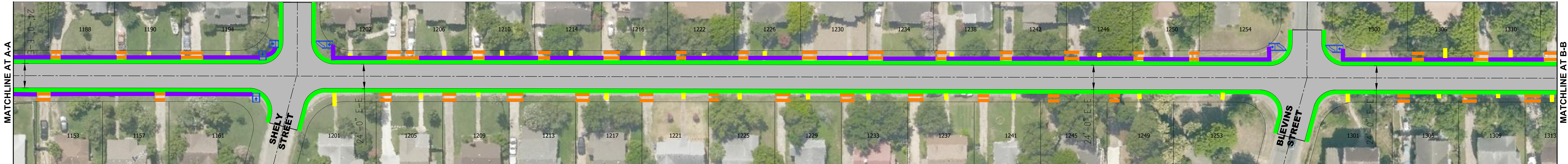
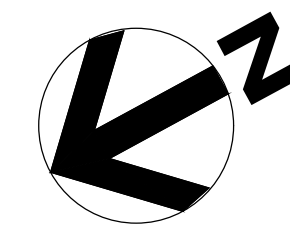
LEGEND

- PROPOSED PAVEMENT
- PROPOSED SIDEWALK REMOVE AND REPLACE
- PROPOSED ADA ACCESSIBILITY RAMP
- PROPOSED CURB AND GUTTER REMOVE AND REPLACE
- PROPOSED DRIVEWAY REMOVE AND REPLACE
- PROPOSED VALLEY GUTTER REMOVE AND REPLACE
- PROPOSED RE-CONSTRUCT SPEED HUMP
- PROPOSED NEW SIDEWALK

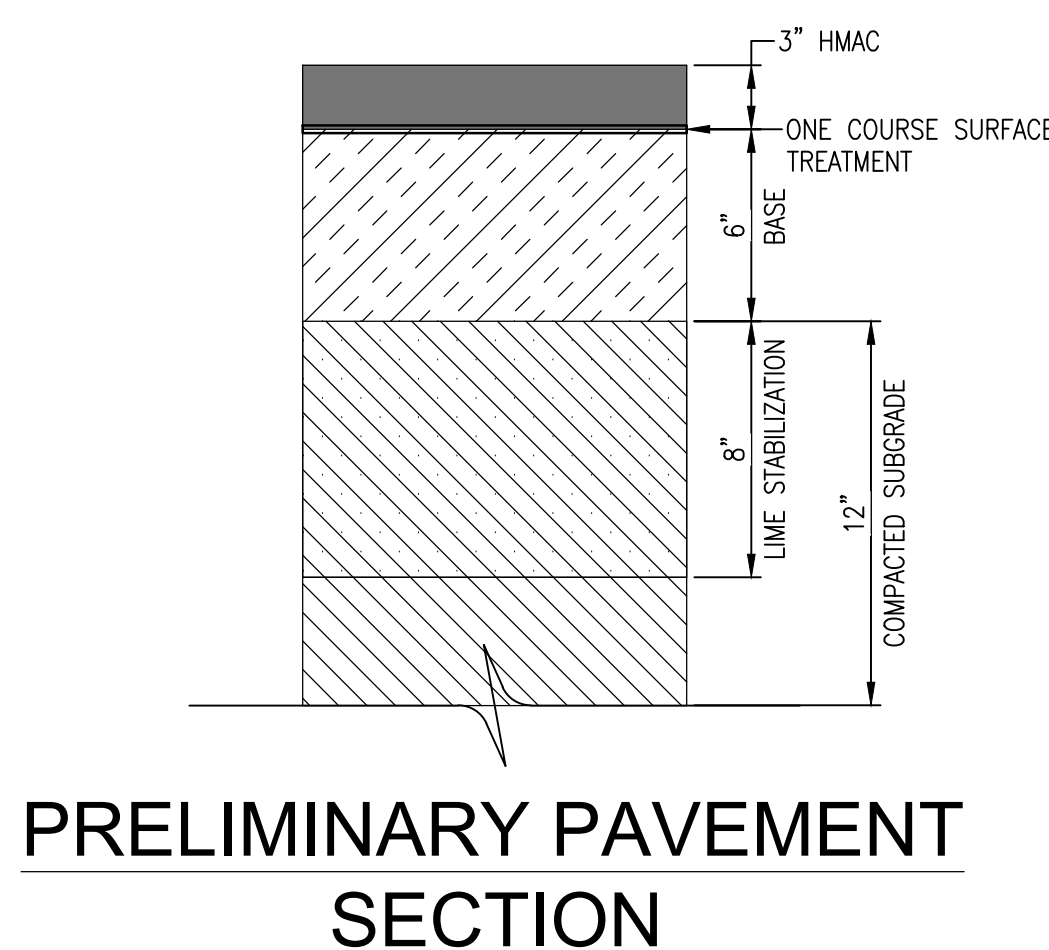


FLORIDA AVENUE

KOSAR ST. TO NORMANDY DR.
RESIDENTIAL STREET REBUILD PROGRAM (YEAR 2019)



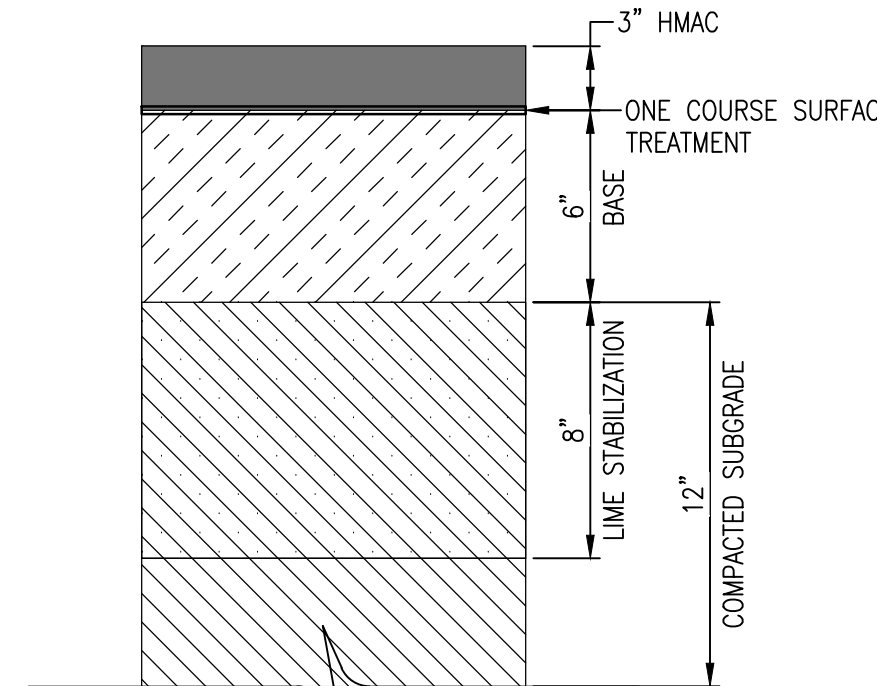
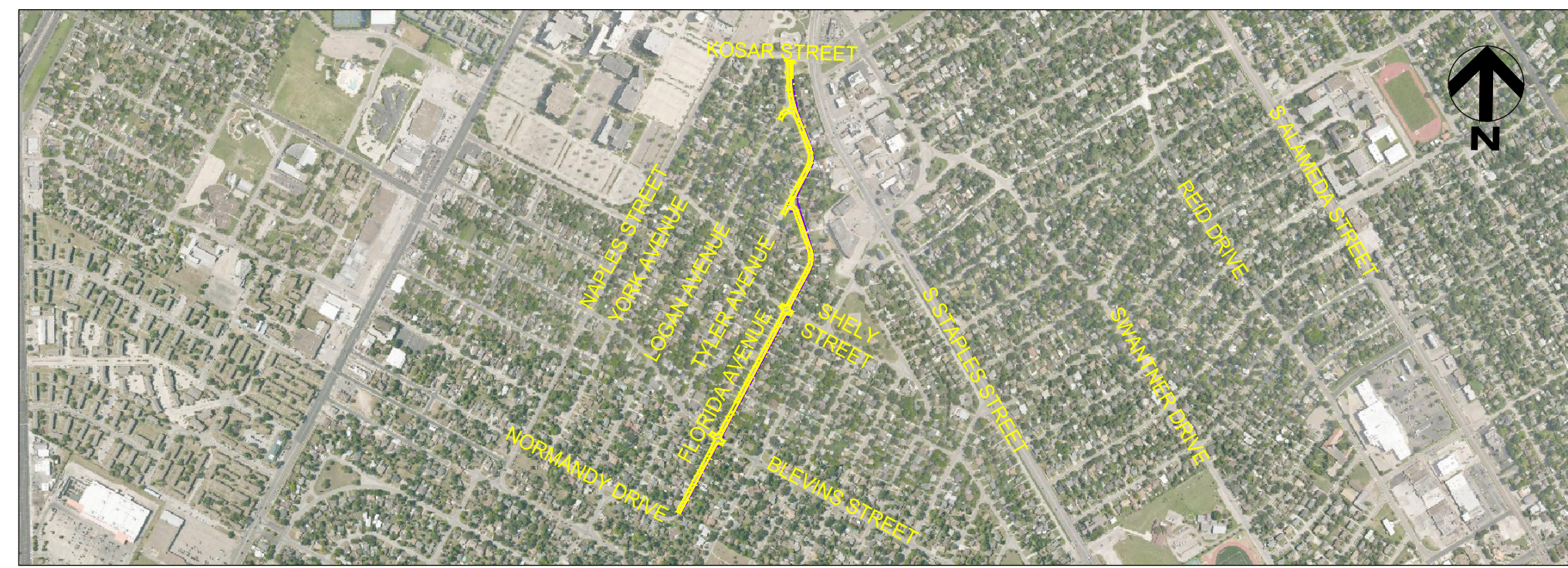
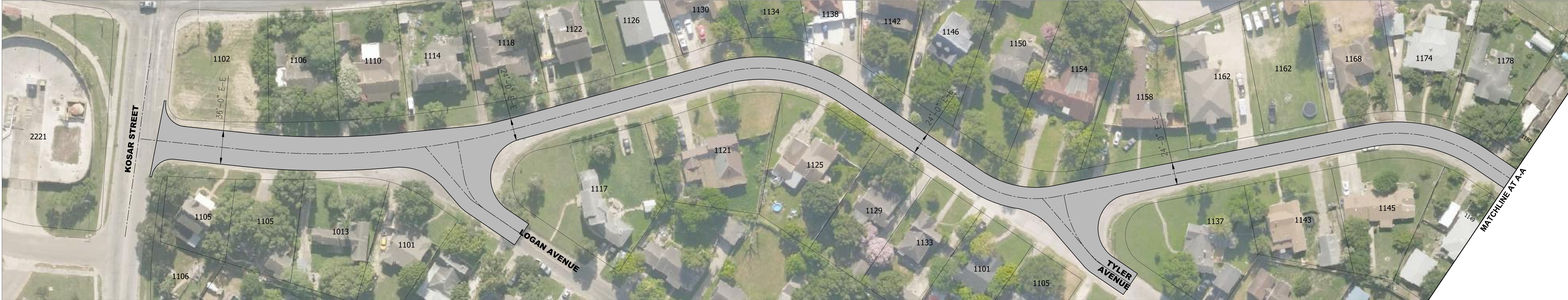
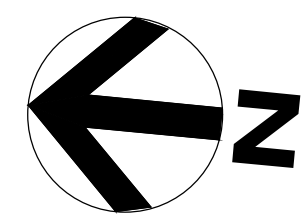
 **HANSON**
www.hanson-inc.com



- LEGEND**
- PROPOSED PAVEMENT
 - PROPOSED SIDEWALK REMOVE AND REPLACE
 - PROPOSED ADA ACCESSIBILITY RAMP
 - PROPOSED CURB AND GUTTER REMOVE AND REPLACE
 - PROPOSED DRIVEWAY REMOVE AND REPLACE
 - PROPOSED VALLEY GUTTER REMOVE AND REPLACE
 - PROPOSED RE-CONSTRUCT SPEED HUMP
 - PROPOSED NEW SIDEWALK

FLORIDA AVENUE

KOSAR ST. TO NORMANDY DR.
RESIDENTIAL STREET REBUILD PROGRAM (YEAR 2019)

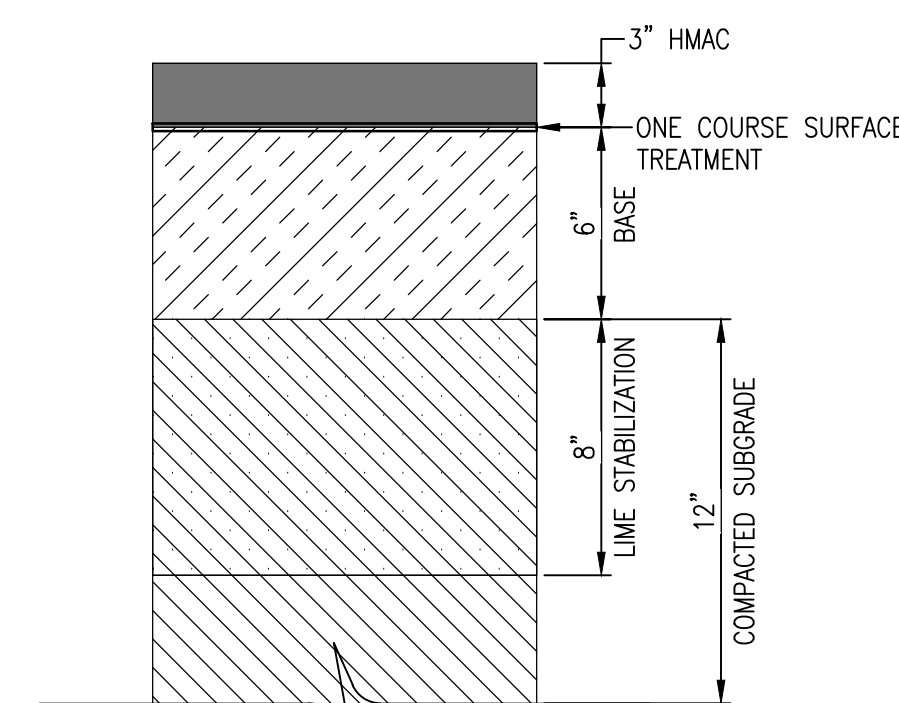
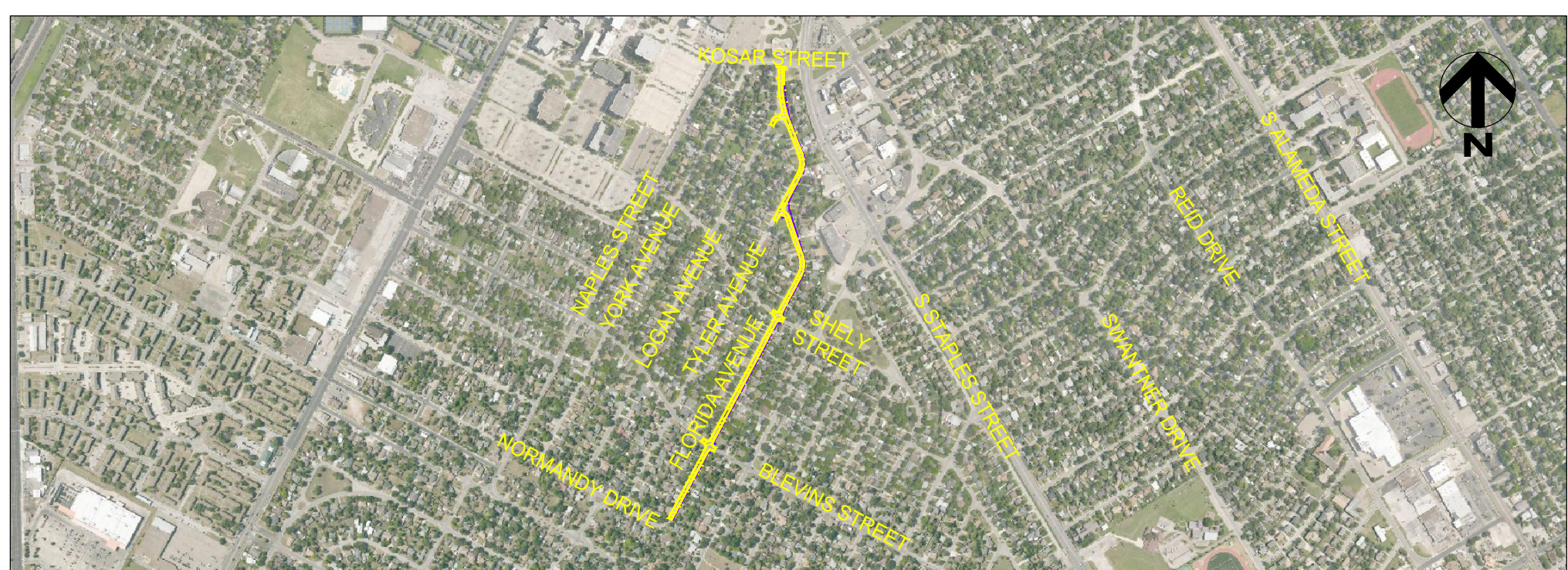
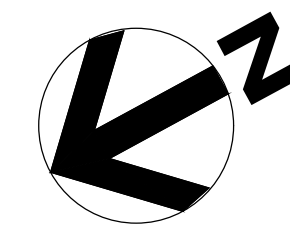


PRELIMINARY PAVEMENT
SECTION

LEGEND
PROPOSED PAVEMENT

FLORIDA AVENUE

KOSAR ST. TO NORMANDY DR.
RESIDENTIAL STREET REBUILD PROGRAM (YEAR 2019)



PRELIMINARY PAVEMENT
SECTION

LEGEND
[Grey box] PROPOSED PAVEMENT