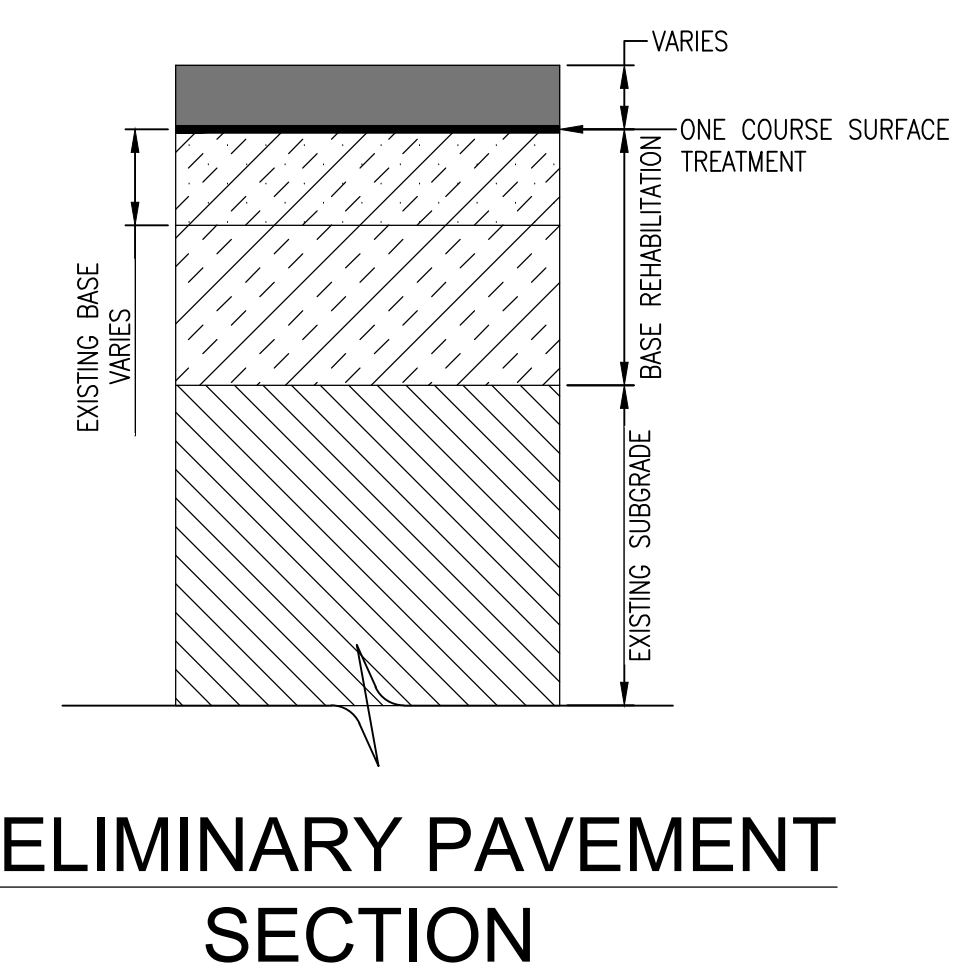
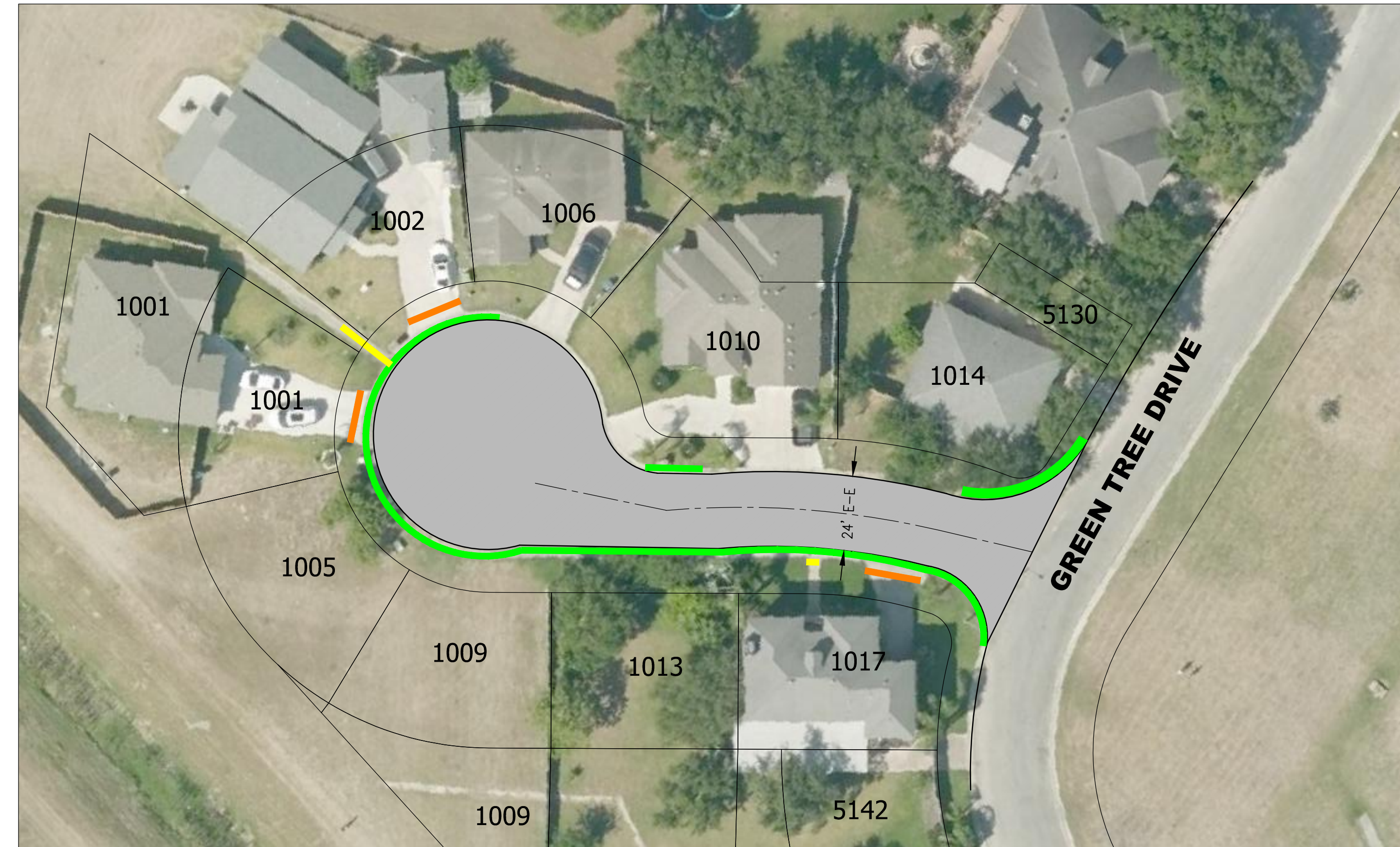
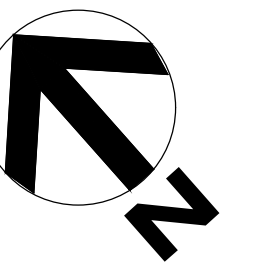
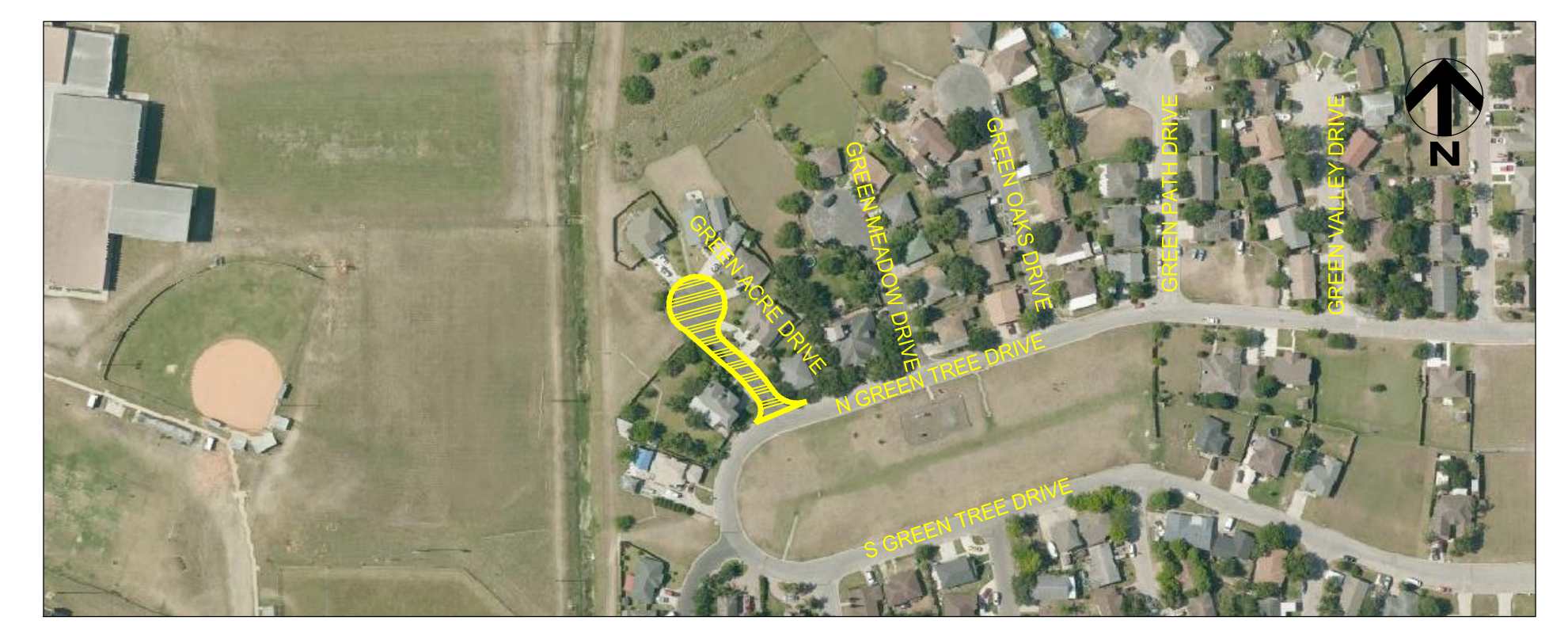


GREEN ACRE DRIVE

DEAD END TO GREEN TREE DR.
RESIDENTIAL STREET REBUILD PROGRAM (YEAR 2019)

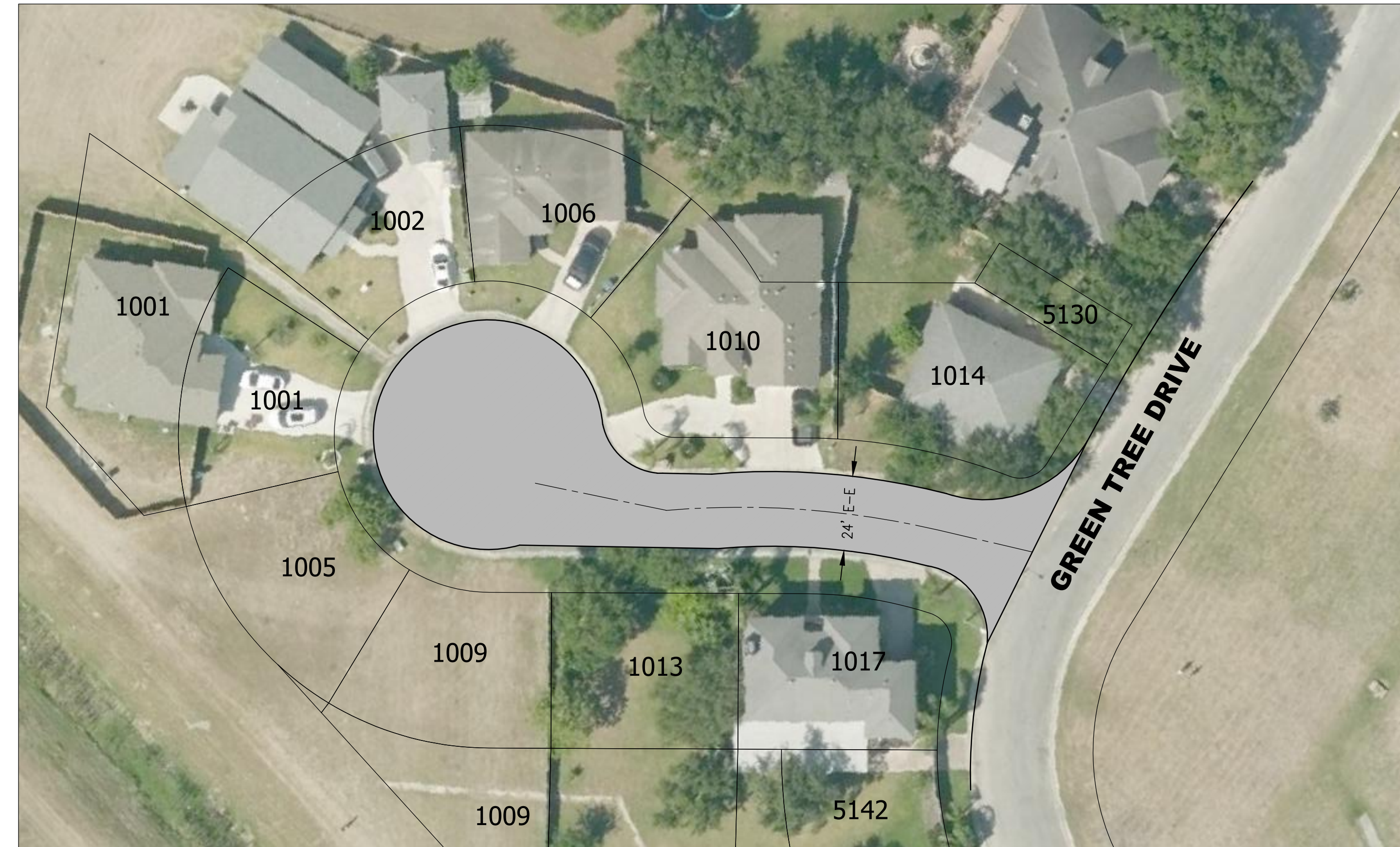
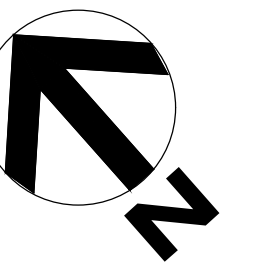


- LEGEND**
- PROPOSED PAVEMENT
 - PROPOSED SIDEWALK REMOVE AND REPLACE
 - PROPOSED ADA ACCESSIBILITY RAMPS
 - PROPOSED CURB AND GUTTER REMOVE AND REPLACE
 - PROPOSED DRIVEWAY REMOVE AND REPLACE
 - PROPOSED VALLEY GUTTER REMOVE AND REPLACE
 - PROPOSED RE-CONSTRUCT SPEED HUMP
 - PROPOSED NEW SIDEWALK

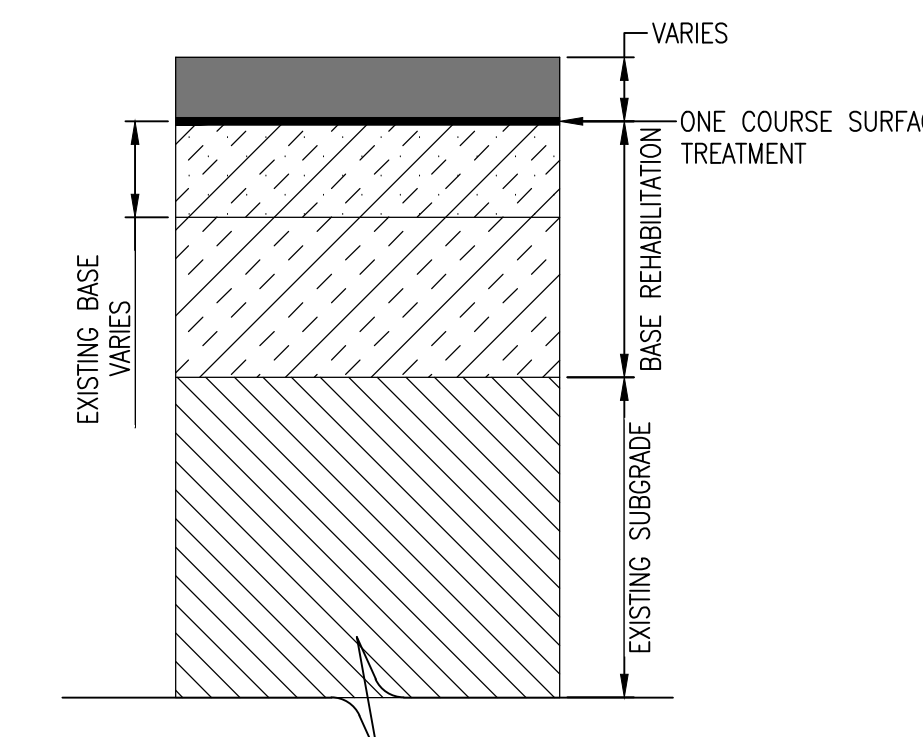


GREEN ACRE DRIVE

DEAD END TO GREEN TREE DR.
RESIDENTIAL STREET REBUILD PROGRAM (YEAR 2019)



LEGEND
[Grey Box] PROPOSED PAVEMENT



PRELIMINARY PAVEMENT SECTION

 **HANSON**
www.hanson-inc.com



BOND

WWW.CCTEXAS.COM