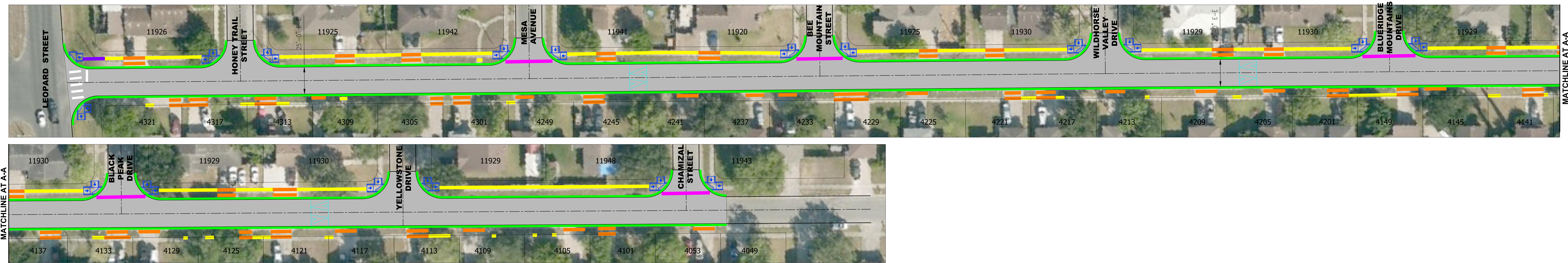
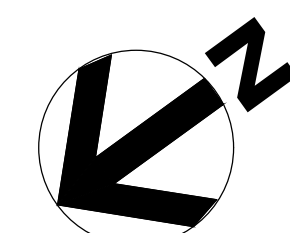


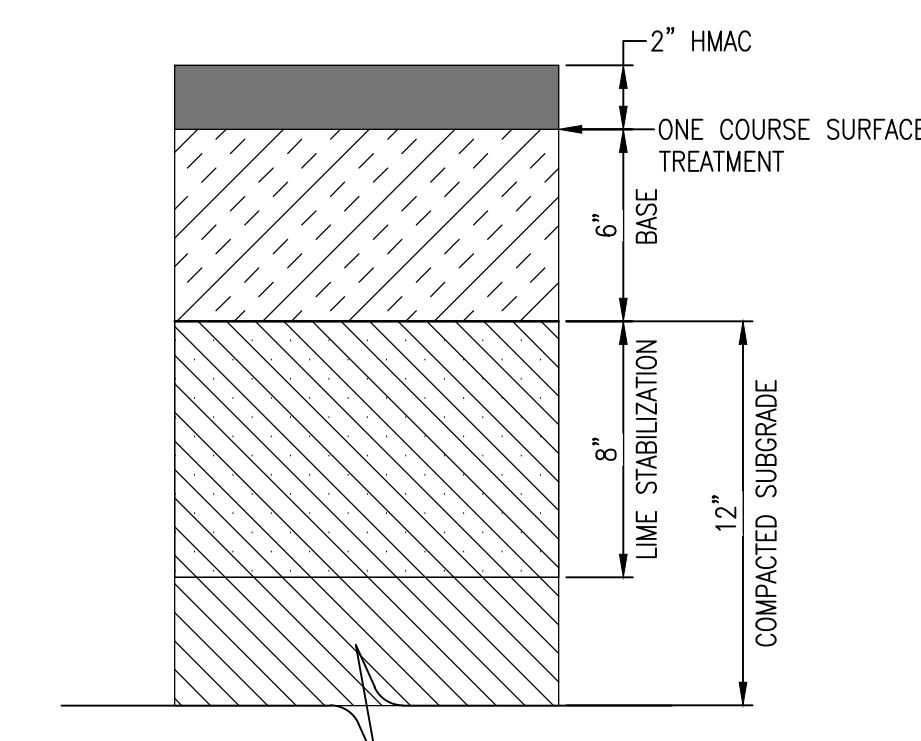
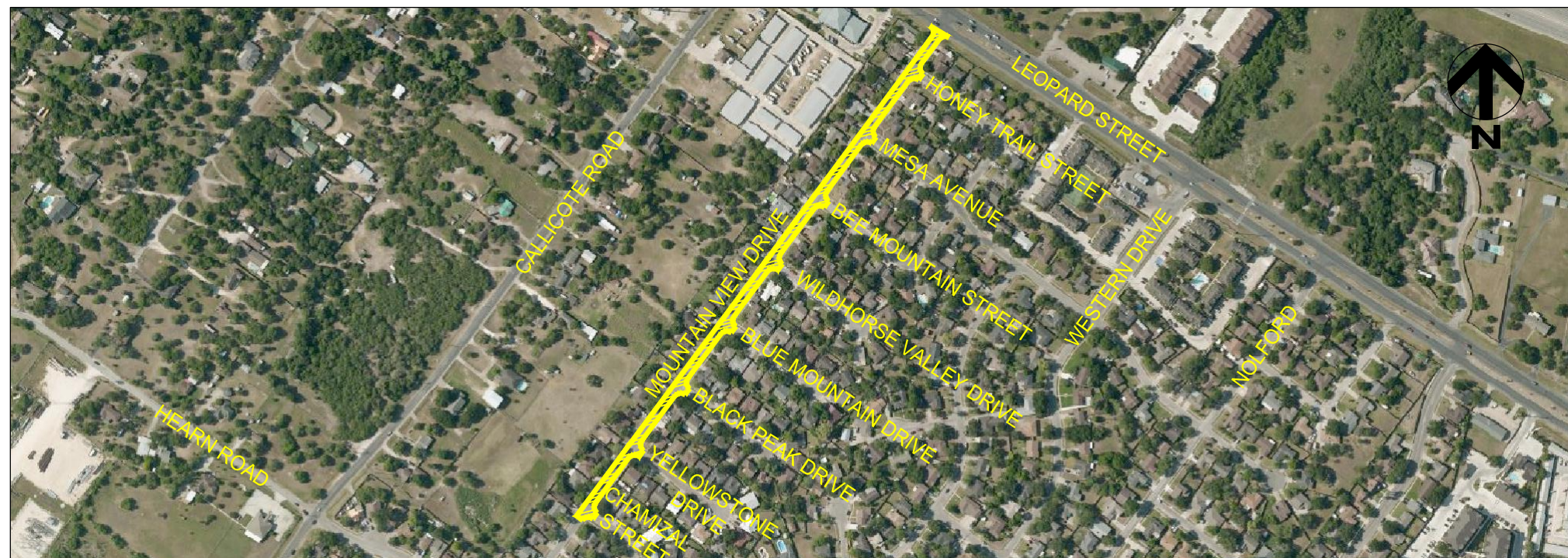
MOUNTAIN VIEW DRIVE

LEOPARD ST. TO CHAMIZAL ST.
RESIDENTIAL STREET REBUILD PROGRAM (YEAR 2019)



MATCHLINE AT A-A

MATCHLINE AT A-A



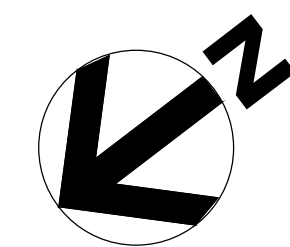
PRELIMINARY PAVEMENT SECTION

LEGEND

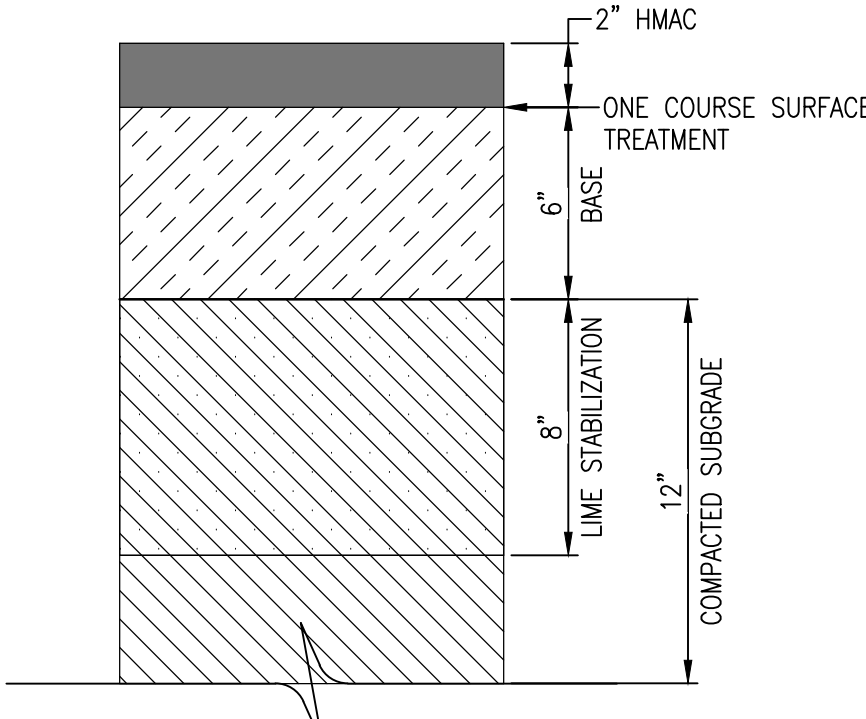
- PROPOSED PAVEMENT
- PROPOSED SIDEWALK REMOVE AND REPLACE
- PROPOSED ADA ACCESSIBILITY RAMP
- PROPOSED CURB AND GUTTER REMOVE AND REPLACE
- PROPOSED DRIVEWAY REMOVE AND REPLACE
- PROPOSED VALLEY GUTTER REMOVE AND REPLACE
- PROPOSED RE-CONSTRUCT SPEED HUMP
- PROPOSED NEW SIDEWALK

MOUNTAIN VIEW DRIVE

LEOPARD ST. TO CHAMIZAL ST.
RESIDENTIAL STREET REBUILD PROGRAM (YEAR 2019)



LEGEND
PROPOSED PAVEMENT



PRELIMINARY PAVEMENT SECTION

